

A scenic view of a golf course. In the foreground, a paved path curves through a grassy area. To the left, a wooden fence runs along the path. In the middle ground, a large, dark tree stands prominently, with a smaller tree to its right. The background shows a rolling green golf course with a sand trap, surrounded by a dense forest of trees with autumn foliage in shades of yellow, orange, and red. The sky is overcast and grey.

**THE  
EXCITING  
WORLD OF**

**INDIAN LAKE**

# PREFACE

Fresh. Beautiful. Challenging. Indian Lake captures the spirit of Pennsylvania's Allegheny Mountains and the spirit of modern living in the creation of a new, exciting concept in living. The shimmering lake cast against the colorful woodland creates a setting of matchless beauty. The rugged, rolling mountains contain a crispness in the air. The combination of beauty and clean air provides a purity of environment that promises modern people relaxation and a happy way-of-life. In the world of modern living, the exciting world of Indian Lake stands alone.

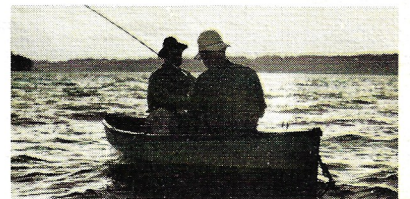
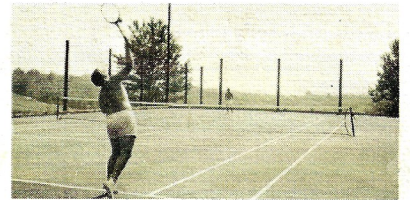
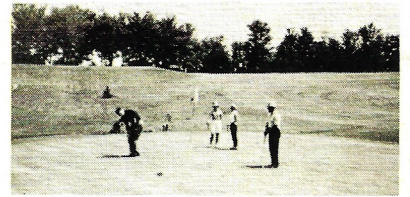
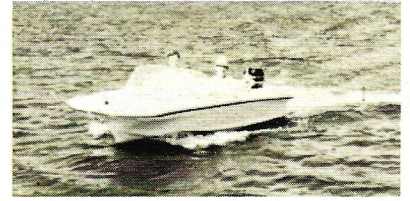
Indian Lake promises your family something new and exciting. It is dedicated to the concept of family living. Children, mothers, fathers, and grandparents revel in the setting and enjoy the activity of this unique development in Western Pennsylvania. Some families make it their year-round home. Others make it their home away from home. All families find Indian Lake an invigorating experience in casual resort-style living.

Rustic homes dot the Indian Lake landscape. Among the shade of oaks, birches, and maples, a new generation enjoys their favorite activities. Boating, skiing, swimming, shooting, golfing, fishing, hunting, and tennis are an everyday way-of-life. Cultural forums, fashion shows, and card parties are available through the lodge.

If you're looking for a dream, turn the page; and discover the exciting world of Indian Lake.

## INDIAN LAKE

CENTRAL CITY, PENNSYLVANIA

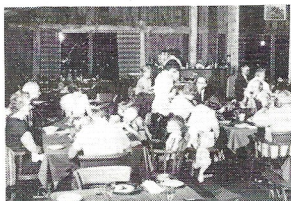
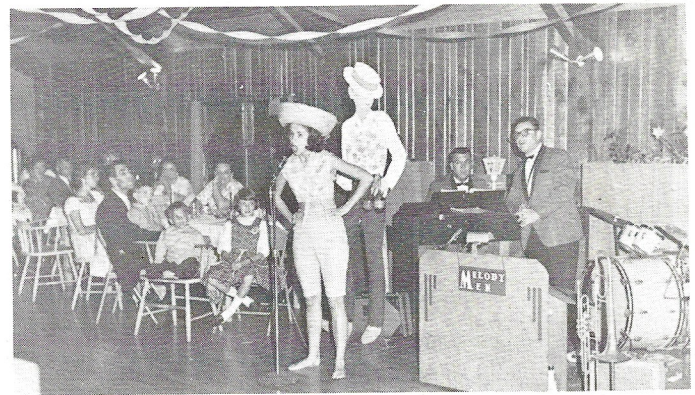
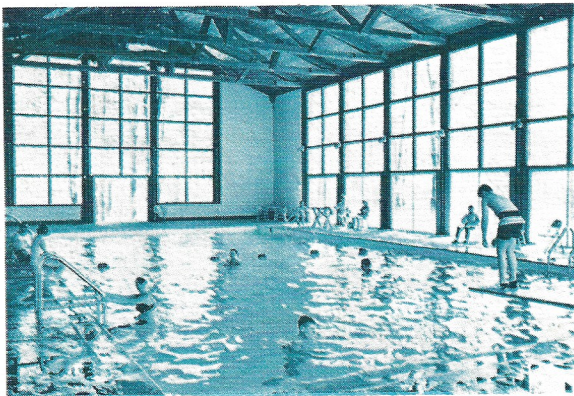


# INDIAN LAKE LODGE . . .

High above the glimmering lake, at the top of the ski slopes, the lodge is the hub of family social activity. Home-owners gather to relax, visit, dine and enjoy themselves in the company of others.

The scene of many parties, fashion shows, and forums, the lodge houses many of the residents' favorite facilities. The popular dining room and adjacent lounge bustles continually with activity. Children laugh and play in the heated indoor-outdoor pool. Sportsmen unwind in the modern locker rooms. And, golf's advocates replay the missed putts in the stag lounge.

All Indian Lake residents enjoy the lodge. Special family plans and rates are such that they are surprisingly lower than rates for comparative facilities throughout the state. When you own a home at Indian Lake, the lodge plays an exciting role in your life.



## YEAR-ROUND SWIMMING FUN

Fun lovers of all ages splash year-round in Indian Lake's big, indoor-outdoor, heated swimming pool. This new swimming facility affords residents an outlet for invigorating exercise and casual play.

Pool loungers, swimmers, and bathers relax in luxury around the pool. Fashionable furniture on the pool's edge furnishes a peaceful snoozing place and the restful atmosphere of the pool's lounge is just a step away. Sliding glass doors give sun-lovers easy access to outside lawns and patios. Around this fun-time pool, families enjoy the life and leisure of Indian Lake; they enjoy the company of other families; and they find a new world of year-round excitement. At the Indian Lake pool, only the depth of one's sun tan acknowledges the passing of time.

# ... INDIAN LAKE



## 20 MILE SHORELINE

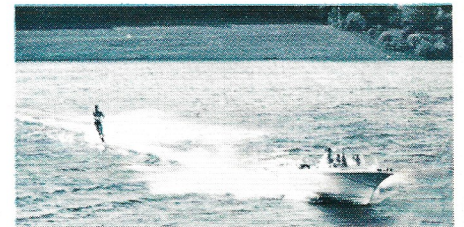
Indian Lake dam with its 100 foot high breast was constructed in 1962. It backed up the crystal clear mountain water and created a 750 acre lake with 20 miles of beautiful, timbered shoreline.

The lake, believed to be the largest, private, man-made body of water in the world, carries Indian Lake residents over its surface in speeding boats and on flashing skis. Its horseshoe shape provides more shoreline and more scenic boating. The lake is engineered so that the depth will never vary more than a foot. This feature assures residents continued excitement and property value.



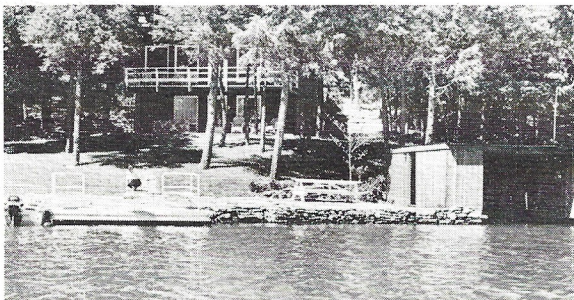
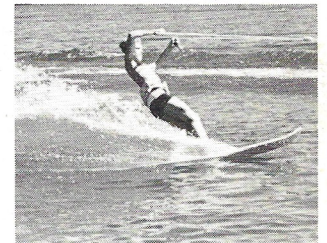
## BOATING

Sports enthusiasts enjoy both sailing and motor boating from private docks. All sizes and horsepower of outboard powered boats are permitted. Patrolmen enforce water safety and local and state boating regulations.



## WATER SKIING

Seven hundred and fifty acres of water surface supplies a lot of water skiing thrills. If chasing a speeding boat is your idea of excitement; then, Indian Lake's water skiing, competition, and clubs are a part of your world.



## LAKEFRONT LIVING

Beneath the protection of hemlocks and hardwoods, privately owned homes of modern and rustic design dominate the scene. Residents become members of the Indian Lake Service Corporation, a non-profit organization set up to administer services rendered to all residents. Lots are provided with basic utilities such as paved roads, electricity, telephone service, and water.

## FISHING

Indian Lake abounds with rainbow trout. It was stocked in 1963 under the direction of Dr. Edwin L. Cooper, an eminent marine biologist. Today, under good water shed conditions, many of the trout measure up to 22 inches in length. Tests are constantly made to assure the highest standard of water quality.

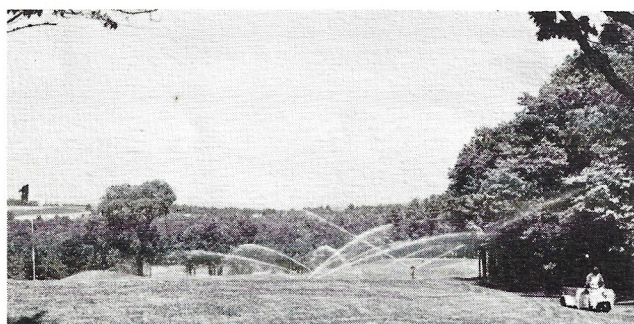


# GOLFING . . .

## INDIAN LAKE'S OWN BEAUTIFUL AND CHALLENGING COURSE

Against the backdrop of the Allegheny Mountains, golfers delight in their favorite sport on Indian Lake's private, 9 hole, 3320 yard, par 36 golf course. The layout challenges the golfer with its expert utilization of the terrain's natural contour. Fairways and greens are completely irrigated for optimum golfing conditions. A practice range adjoins the course.

Indian Lake residents and their guests find the course a true test of golf. A yearly membership fee covers maintenance cost. Tournaments throughout the season give men and women an opportunity to compete for fun and trophies.



The Indian Lake layout appears surprisingly open. This illusion is supported by the wide vistas of distant horizons. But, a long tangled rough awaits to engulf the stray drive and entangle the clubhead. The fairways are quite level despite being cut from the mountains. The course is convenient to the lodge and is popular with both the men and women of Indian Lake. When you play the course, there will be no doubt in your mind of the architect's cunning abilities or the course's integrity.

There are few better par 3 tests than the Indian Lake number three hole. The relatively short fairway is well protected by rough and plays long in fair or dry weather. You shoot for the sweeping, uphill green from an elevated tee and the distance is deceiving. The green is hemmed on the left and in the back by thick woods. The right side is guarded with high shaggy brows. The putting surface leaves the golfer with either an uphill or downhill putt. The tricky contour of the green with slight undulations between the apron and the cup breaks the putt to either the right or the left.

# SKIING . . . DAY AND NIGHT

Indian Lake's ski slopes come alive with the sound of fun and laughter during the winter season. Here is exciting daytime and night skiing away from the crowded bustle of public slopes.

Whatever your speed, there's an excitement filled slope for you. Beginner, novice, intermediate, and expert slopes run from the vicinity of the lodge down to the lake's edge. A poma lift and rope tows provide a helpful return lift. Modern snow making equipment is in operation to provide the best possible skiing conditions.

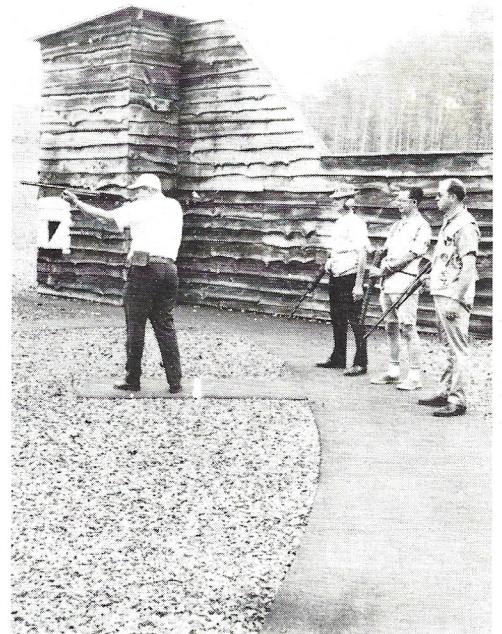
For the convenience of residents, a certified Ski Professional is retained and an equipment shop is maintained.



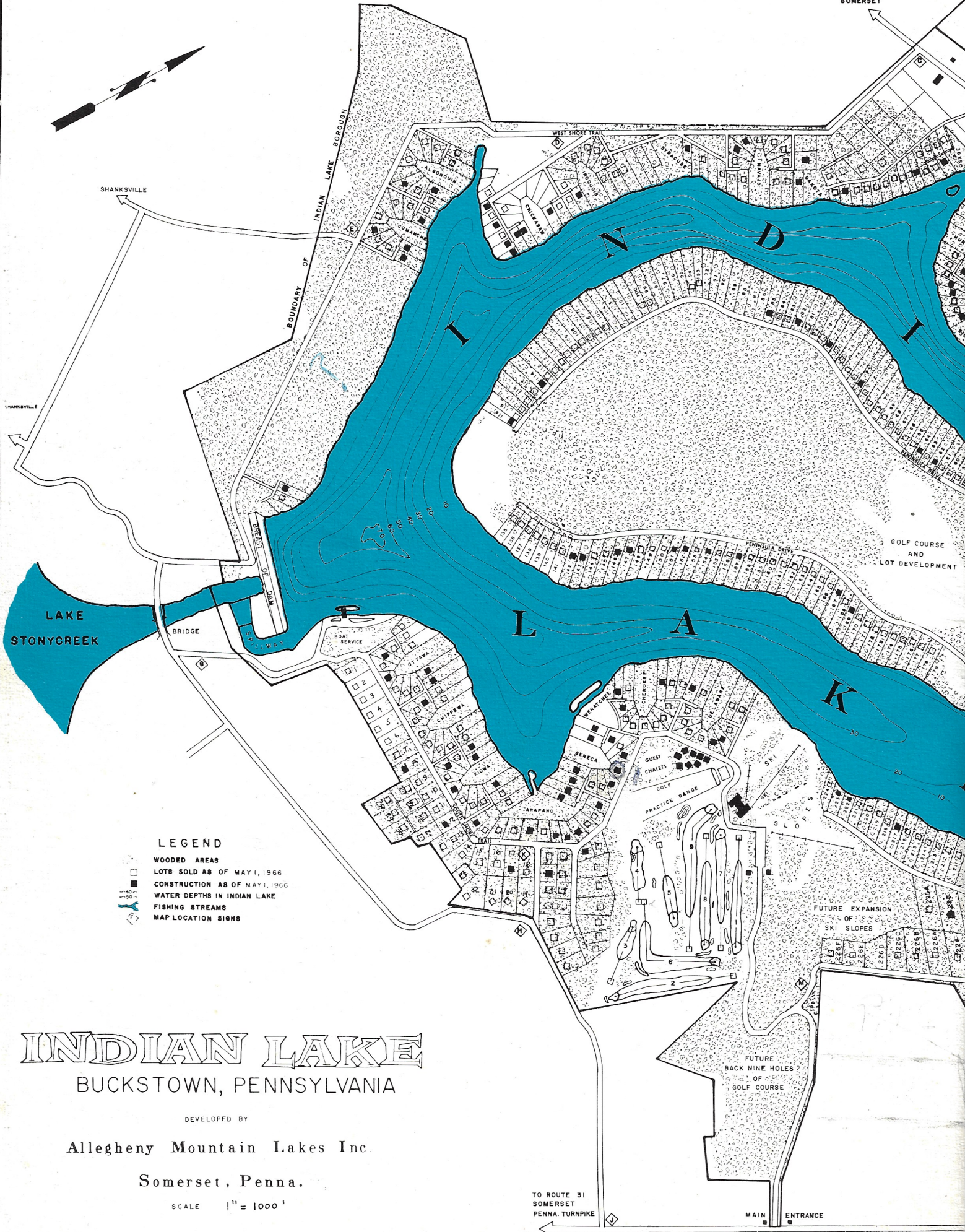
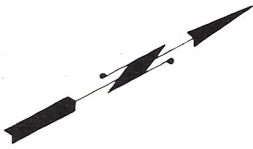
## TRAP AND SKEET SHOOTING

Experienced hunters, sportsmen, and beginners gather at the Indian Lake Gun Club to sharpen their eye and improve their skill. Nationally franchised by Winchester, the club features a network of trap and skeet shooting facilities. A moving, three dimensional, "running deer target" adds to the reality of conditions. The complex operates in daylight and at night under lights.

Inside the clubhouse, enthusiasts enjoy a small-bore rifle and pistol range, a gun shop, and a relaxing lounge where tales of hunting prowess gain wide acceptance. The club operates under the auspices of a graduate gunsmith and the National Rifle Association.



SHANKVILLE  
SOMERSET



SHANKVILLE

BOUNDARY OF INDIAN LAKE BOROUGH

WEST SHORT TRAIL

SHANKVILLE

GOLF COURSE AND LOT DEVELOPMENT

LAKE STONYCREEK

BRIDGE

BOAT SERVICE

LEGEND

- WOODED AREAS
- LOTS SOLD AS OF MAY 1, 1966
- CONSTRUCTION AS OF MAY 1, 1966
- WATER DEPTHS IN INDIAN LAKE
- FISHING STREAMS
- MAP LOCATION SIGNS

# INDIAN LAKE

BUCKSTOWN, PENNSYLVANIA

DEVELOPED BY

Allegheny Mountain Lakes Inc.

Somerset, Penna.

SCALE 1" = 1000'

TO ROUTE 31  
SOMERSET  
PENNA. TURNPIKE

MAIN ENTRANCE

FUTURE EXPANSION OF SKI SLOPES

FUTURE BACK NINE HOLES OF GOLF COURSE

BUCKSTOWN

BOUNDARY INDIAN LAKE BOROUGH

NORTH SHORE TRAIL

CALENDAR'S RUN

WATERFOWL AND FISH REFUGE

WATERFOWL AND FISH REFUGE

INDIAN LAKE AIRPARK

INDIAN LAKE SHOOTING PARK

BOUNDARY OF INDIAN LAKE BOROUGH

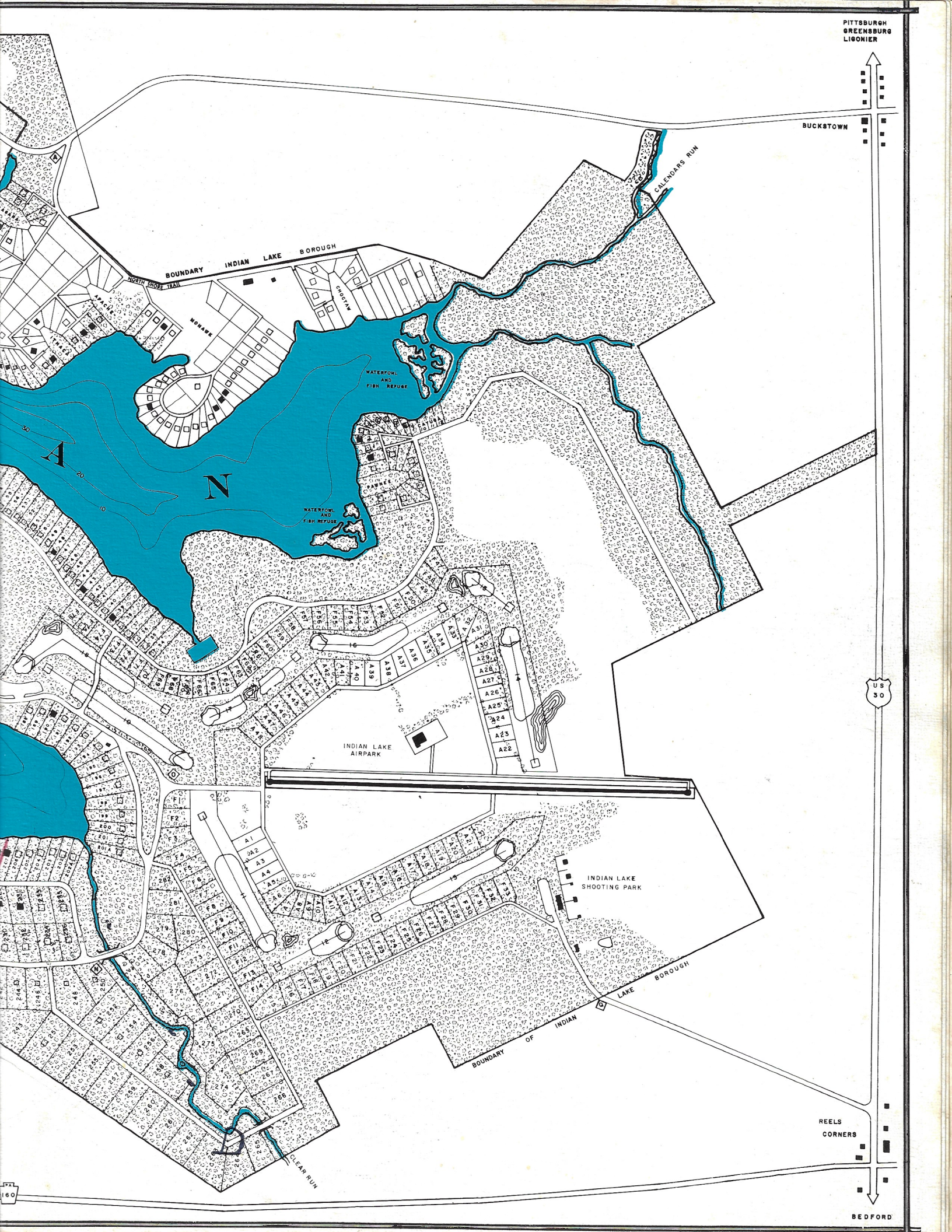
CLEAR RUN

US  
30

REELS  
CORNERS

BEDFORD

160





# INDIAN LAKE'S... NEW 18 HOLE CHAMPIONSHIP GOLF COURSE

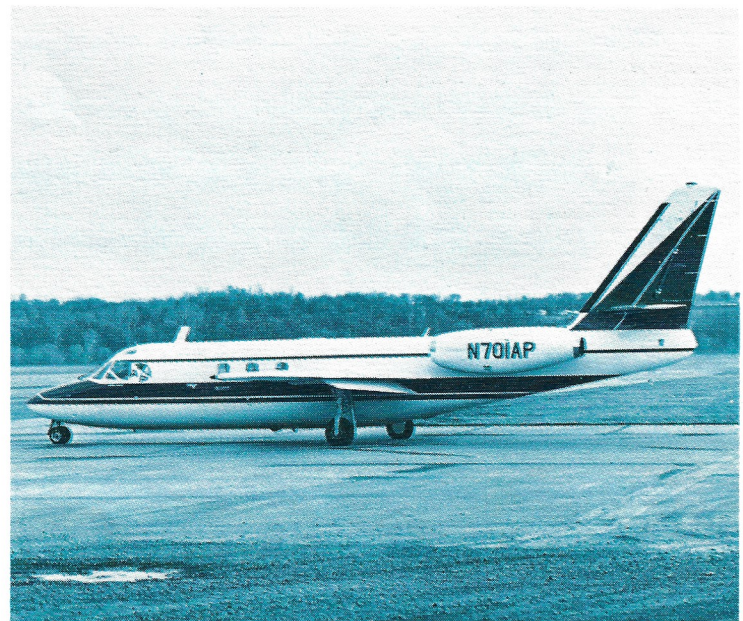
designed by golfing's  
all time great

## ARNOLD PALMER

Construction of Indian Lake's new eighteen hole championship golf course, designed exclusively for Indian Lake by Arnold Palmer, began in the spring of 1966. The new layout will be completed in 1970.

The new course is being cut from the center of Indian Lake's heavily wooded peninsula and stretches over the peninsula's full length. Water, woods, and rugged terrain, the materials for a great course are available. The course has all the characteristics of a championship course and yet, being built in the province of the beautiful Alleghenies, retains a charm and individuality so important to challenging golf. The culmination of the knowledge and respect for championship golf that Arnold Palmer has acquired during his years on the world tour is reflected in the design.

The course, as designed by Palmer, features long lush fairways, studded with rolling knolls and guarded by thick walls of Pennsylvania woodland. The greens are large and inviting but protected by huge yawning bunkers with an occasional pine or birch to test the trueness of the approaching shot. The course is completely irrigated for optimum golfing conditions. A clubhouse-hotel with accommodations for 150 guests will be built on the peninsula's lakefront, adjacent to the course.



## ... WITH A UNIQUE GOLF COURSE AIRPORT



The new 4,000 foot private airport runway enables Indian Lake residents and their guests to wing to the lake, taxi, and be a short walk away from their home on the peninsula. This unique golf course airport features parking for private planes. It is contained in the loop of the back nine.

Now, Indian Lake's sportsmen, families, and commuters have access to quick transportation. Eventually, the availability of air travel will permit the running of a commuter service from Indian Lake to strategic cities in the tri-state area. This service will afford families maximum use of Indian Lake facilities without excluding the breadwinner. Commuting to such cities as Pittsburgh will take only 30 short minutes. Each day the world grows smaller; and the exciting world of Indian Lake is closer than you think.

### **FAIRWAY LIVING**

A residential development adjoins the new golf course. The rustic homes are not visible from the fairways; thus, Indian Lake's rule of privacy is retained. But, the stretching fairways and rolling greens unfold before the homeowner's gaze.

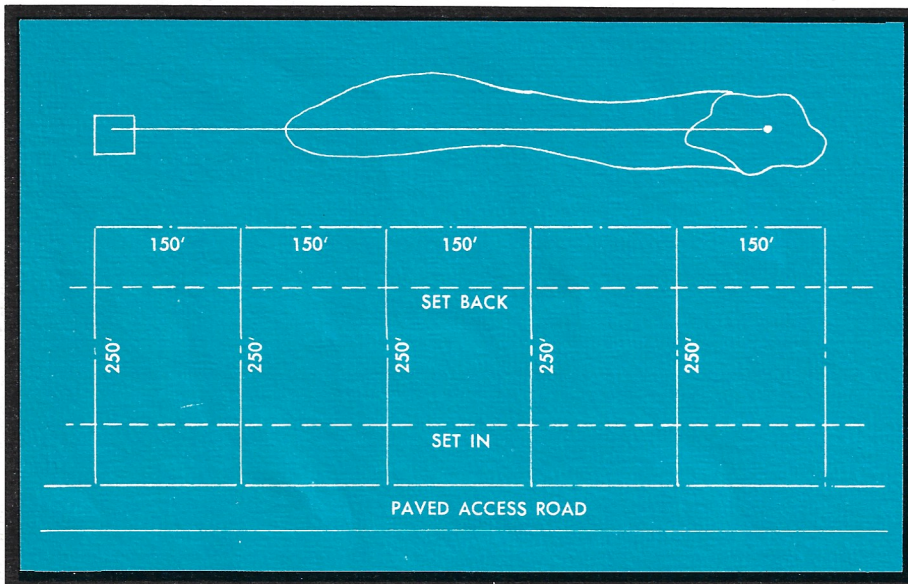
This new pace in stylish living is valued by the golfer for reasons of accessibility and by the non-golfer who finds merit in the many and varied moods of a golf course. There's the picturesque beauty of the course, glistening under the morning's dew and the motion of the course under the trampling feet of golf's colorful and energetic addicts.



# AN OPPORTUNITY FOR FULL OR PART TIME RESIDENCE WITH MAJOR ADVANTAGES—INCLUDING YEAR-ROUND RECREATION

Many typical American families are now enjoying Indian Lake the year-round. Each piece of property features unrivaled privacy and unspoiled natural surroundings. Some families make Indian Lake their second-home for leisure living on a week-end and vacation basis. Other families reside at the lake on a full-time basis, the year-round. Some families have yet to build on their homesites but still enjoy the social advantages and activities available.

Second-home, year-round, or on a social basis, every family exercises the full rights of an Indian Lake resident. If you enjoy reveling in an invigorating atmosphere, if nature's rustic glow exhilarates you, and if you value new friendships in casual surroundings, then the exciting world of Indian Lake could very well be your kind of world. To this end, we suggest you visit the lake and find out, first hand.

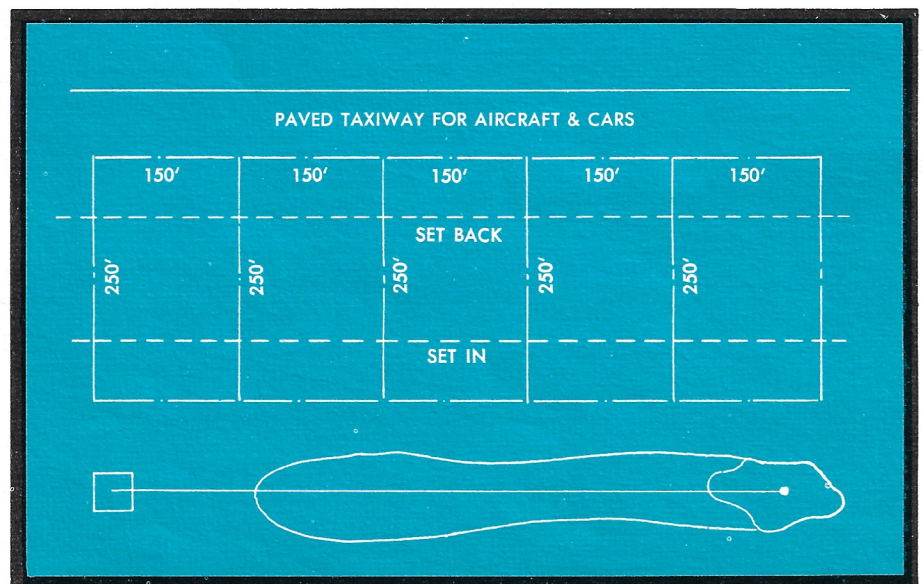


## FAIRWAY LOTS

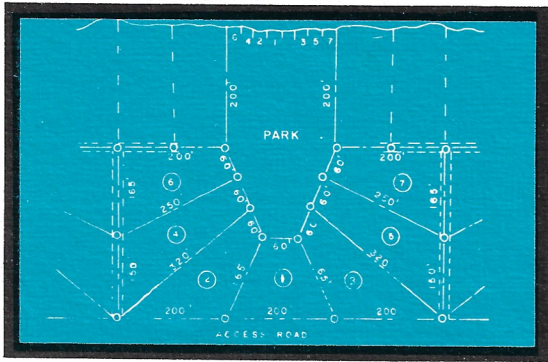
These beautifully wooded lots adjoin the new Indian Lake eighteen hole championship golf course presently being constructed. The size of each lot, 150 x 250, enables residents to enjoy natural surroundings in complete privacy. This new style of living is valued by the golfer because of access to the course and by the non-golfer for picturesque beauty. The lots have a private access road, boat docking facilities at the nearby marina, and electric and water line service. Building requirements are 900 square feet minimum with 75 feet setback from the golf course and road.

## AIR PARK-FAIRWAY LOTS

This unique development of properties enables residents to have maximum use of Indian Lake facilities with the advantage of fast, convenient air transportation. Each lot is 150 x 250 and is ideally situated between the new Arnold Palmer designed golf course and the 4000 foot paved runway. Building requirements are 900 square feet minimum with 75 feet setback from the golf course and taxi area. Boat docking facilities are available at the lake marina. Electric and water line services are included up to each property line.

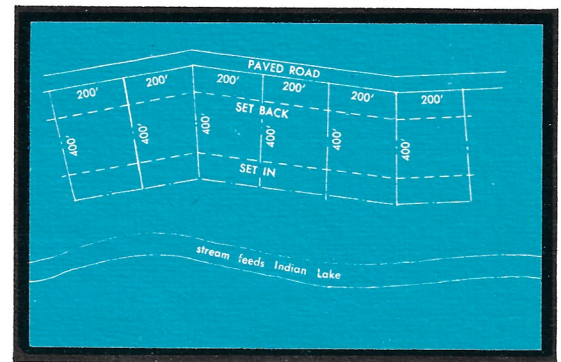


## LAKEFRONT-PARK LOTS



Park lots represent the majority of property available at Indian Lake. Each lot is at least one-half acre in size and the group of seven lots surround a several acre park. Lot owners around the park actually receive in their deed, a one-eighth undivided interest in the park area. (The one-eighth interest is held by the Corporation for maintenance purposes.) Each lot has twenty-five feet of actual lake frontage for construction of a dock or beach swimming facilities. No structure, except docks, is permitted in the park area. Private access roads are provided to all park lots, and also electric and water line service.

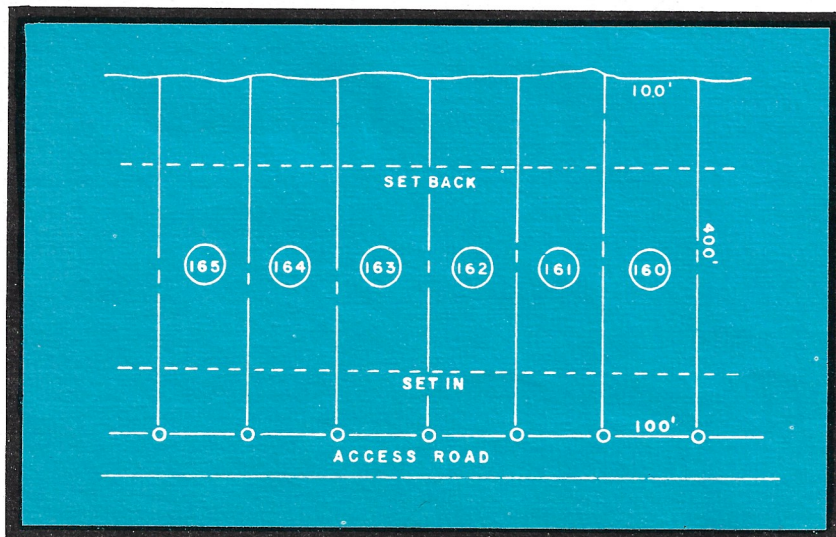
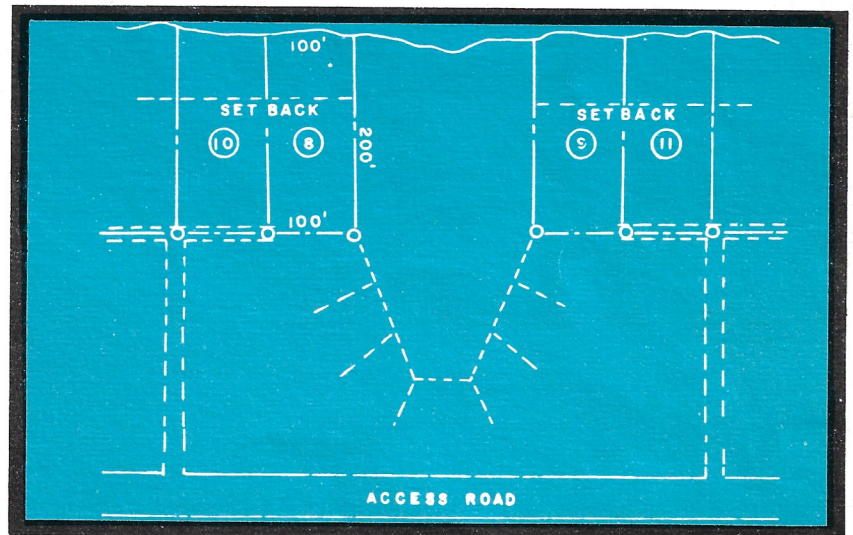
## PENINSULA-ESTATE LOTS



With privacy the rule at Indian Lake, the estate lots are designed to provide residents with not only privacy, but easy access to all Indian Lake facilities. Lots vary in size up to 200 x 400 feet, or approximately two acres. Beautifully wooded, each lot is bordered by a paved road and most by a quiet, natural running stream that feeds into Indian Lake. Minimum building requirements are 480 square feet with 100 feet setback. Electric and water line services are included to each property line.

## LAKEFRONT LOTS

Lake front lots have one hundred feet of actual lake frontage and are at least two hundred feet deep, making each lot at least one-half acre in size. Each lot has a private access road, and electric and water line service. Homes must be constructed on the rear two-thirds of the lot as measured from the lake. The size of the lot plus its wooded natural surroundings and the ownership of actual lake frontage gives a privacy not usually found in other developments.



## PENINSULA LOTS

Peninsula lots at Indian Lake represent the utmost in privacy within a natural environment. They differ from other lake front lots in that there is but one row of lots extending from the road down to the lake. Each lot has one hundred feet of lake frontage and is four hundred feet deep, making each lot one full acre in size. The size of homes is limited to nine hundred feet, minimum, instead of the four hundred eighty square feet prevailing in other parts of the development.

# INDIAN LAKE

## PROPERTIES

### OWNERSHIP OF LAND

The purchase of land is complete and outright at Indian Lake. Residents receive a General Warranty Deed at the time of the purchase free and clear of any encumbrance. Building regulations, sanitation, and other particular covenants are set forth in the deed.

### PRIVACY

The prevailing philosophy of Indian Lake is one of unrivaled privacy and unspoiled natural surroundings. Use of the lake and related facilities is reserved exclusively for Indian Lake property owners and their invited guests. Lakefront lots are laid out in a manner that avoids the crowded housing conditions of typical resorts. This new private approach allows residents to enjoy leisure living in the unspoiled countryside.

### BUILDING & ZONING LAWS

Laws governing the building and property of Indian Lake are strict, but fair. In order to protect the resident's investment, the deed contains requirements for general plan approval, setback of buildings from the lake, and restrictions on tree cutting. Building minimums exist and substandard construction effecting the value of surrounding property is not permitted.

### ELECTRIC POWER

Electricity is available to all lots at relatively low rates. Heat, power, appliances, all of the modern conveniences are available to the Indian Lake resident while he enjoys the rustic environment of his surroundings.

### WATER LINES

Soft, pure mountain water is piped under pressure throughout the development and into each lot. The system is non-profit and is owned by lake residents. This co-operative ownership insures an adequate and economical water supply. The Indian Lake water shed is under the surveillance of a marine biologist as a preventive measure.

### ROADS

All roads within the development are private and paved. A program of snow removal is maintained during the winter months.

### SANITATION

Sanitation is rigidly controlled under conditions set forth in an ordinance with the State Health Department. Periodic and individual inspections are conducted to assure waste systems are properly installed and operated.

### INVESTMENT SECURITY

The projected future of central Pennsylvania as a recreational area for the eastern United States and the increasing demand for such property in the face of decreasing availability points to a continued rise in the value of Indian Lake property.

### PURCHASING PROPERTY

You are cordially invited to call or write for an appointment to see, first-hand, the exciting world of Indian Lake. One of our representatives will be happy to give you a comprehensive tour of the facilities and to answer any particular questions which you might have. Sales are conducted from the lake office at Indian Lake Lodge. For a tour or particular information, write: Sales, Indian Lake, Central City, Pa. or phone: Area Code 814, 267-2421 or 754-4616.

### FINANCING

The individual buyer can arrange the financing through their personal bank or the Indian Lake Management will arrange terms suitable to any budget through a local bank at normal interest rates.

# INDIAN LAKE

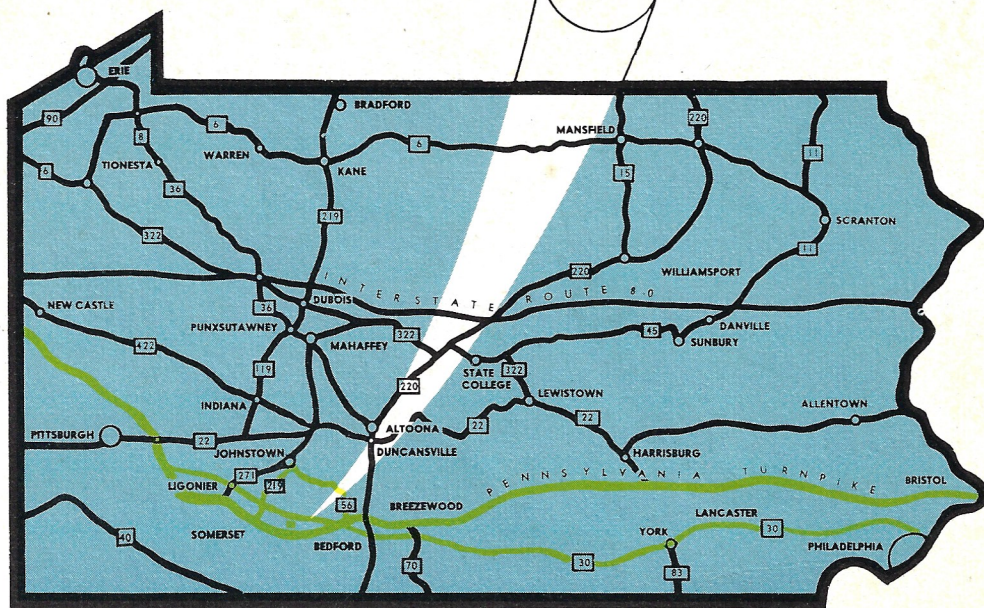


Indian Lake is located just off Pennsylvania route 160, 2 miles south of Reels Corner and 13 miles east of Somerset.

Nestled high in Pennsylvania ski country at an altitude of 2500 feet above sea level, Indian Lake is easily accessible by car and plane.

From the east and west, Pennsylvania routes 30 and 22 and the Pennsylvania Turnpike pass near Indian Lake. From the north and south, routes 219, 160 and 56 lead to the exciting world of Indian Lake.

The Somerset County Airport with a 4,000 foot, paved runway is available for private planes. With prior permission, private aircrafts may land at Indian Lake's Golf Course Airport. A unicom system is available.

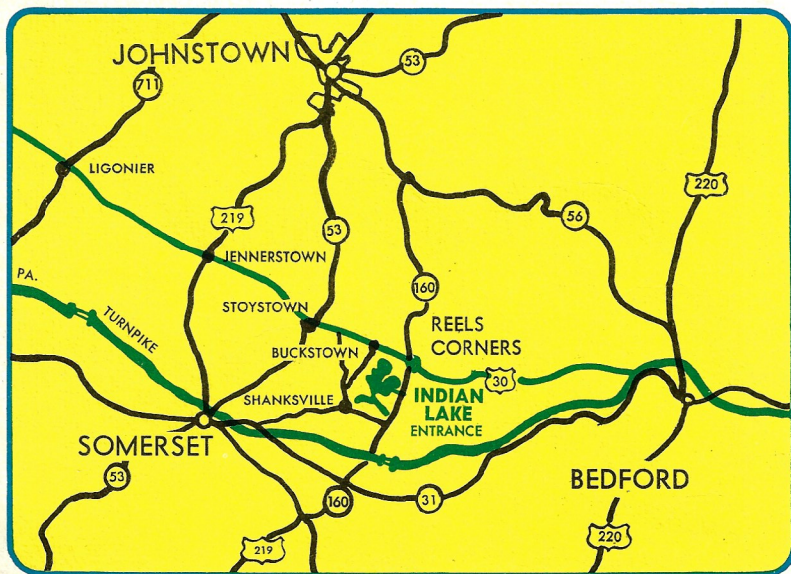


To reach Indian Lake from the turnpike, exit at Somerset; follow 31 east; and turn left on 160 north for six miles to the main gate. From route 30, turn at Reels Corner on 160 south and travel two miles to the main gate.

From the south, take either 219 or 53 north to Somerset and progress to Indian Lake along routes 31 east and 160 north. Or, take 160 north and follow it all the way to Indian Lake's main gate.

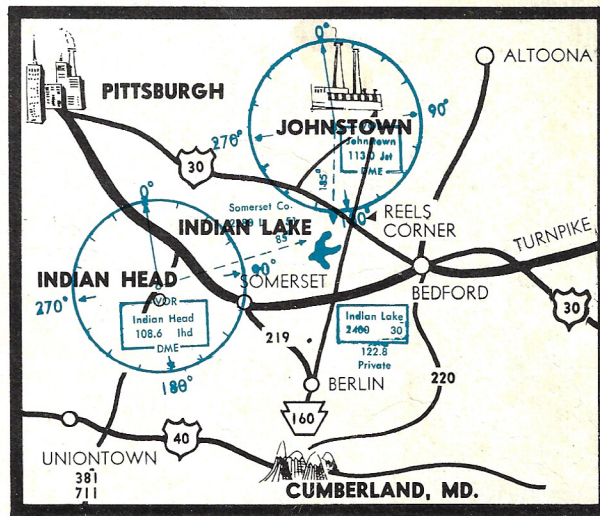
From the north, in the vicinity of Johnstown, follow 219 south to route 30 and then east to Reels Corner and to Indian Lake. Or, 56 and 160 south will take you to Reels Corner and two more miles south on 160 brings you to the exciting world of Indian Lake.

## BY ROAD



## BY AIR

- 15 AIR MILES SOUTH OF JOHNSTOWN
- 55 AIR MILES SOUTHEAST OF PITTSBURGH
- 30 AIR MILES NORTH OF CUMBERLAND
- 105 AIR MILES WEST OF HARRISBURG



- 185° RADIAL FROM JOHNSTOWN VOR—16 N M
- 85° RADIAL FROM INDIAN HEAD VOR—25 N M

135 W Main  
Somerset  
15501

Caroline L & L  
Somerset  
814-445-6594  
Grant Miller  
#14,500

# INDIAN LAKE

**Full or part-time residence • Year-round recreation**

**BOATING • WATER SKIING • YEAR-ROUND SWIMMING POOL  
GOLFING • HUNTING • FISHING • SNOW SKIING • TRAP & SKEET SHOOTING**

**R. D. #1, CENTRAL CITY, PENNSYLVANIA 15926**

**Just 2 Miles off Route 30 on Route 160 South**

**Phone**

**Central City 814 754-4618 Berlin 814 267-2421**

754-4616